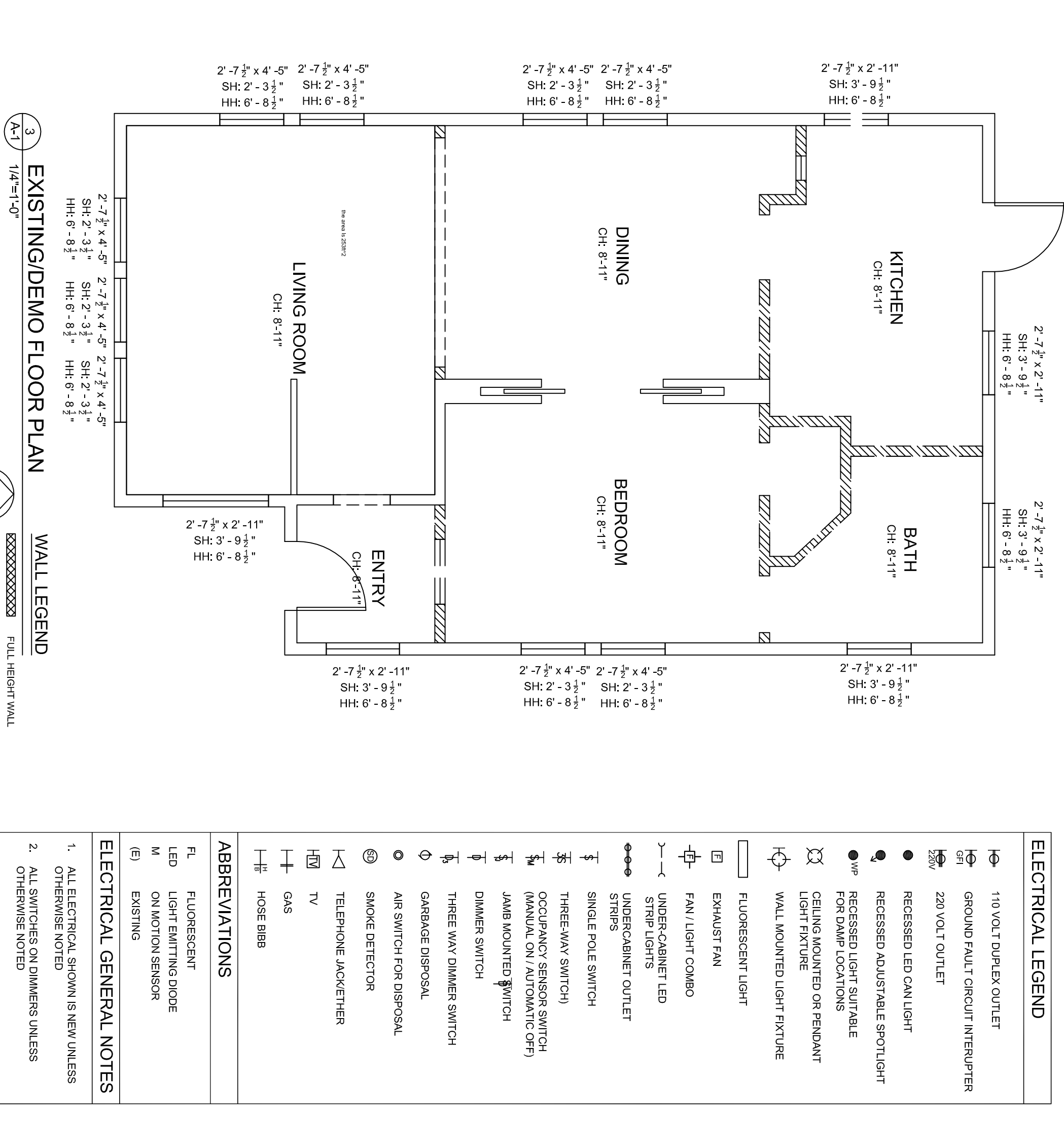
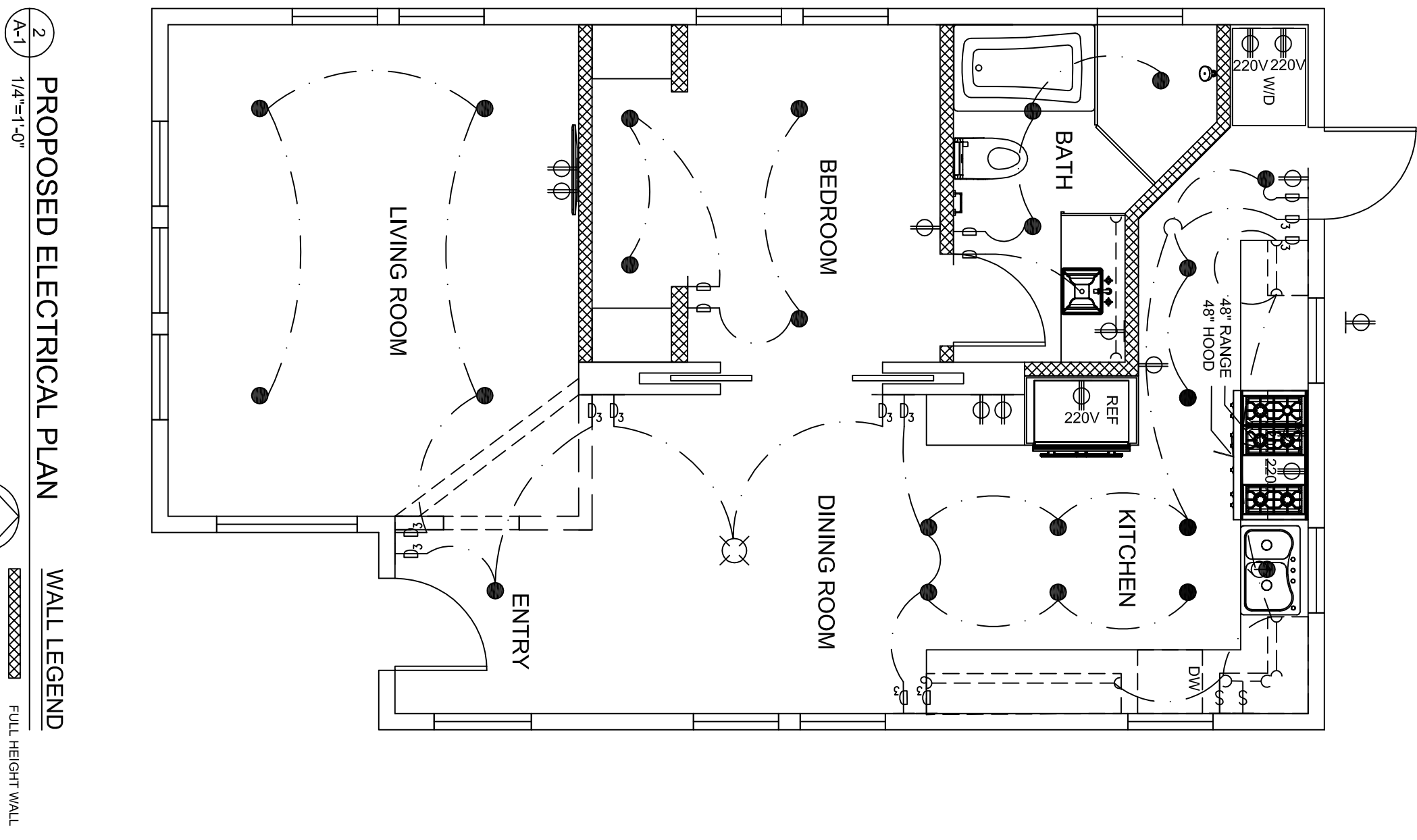


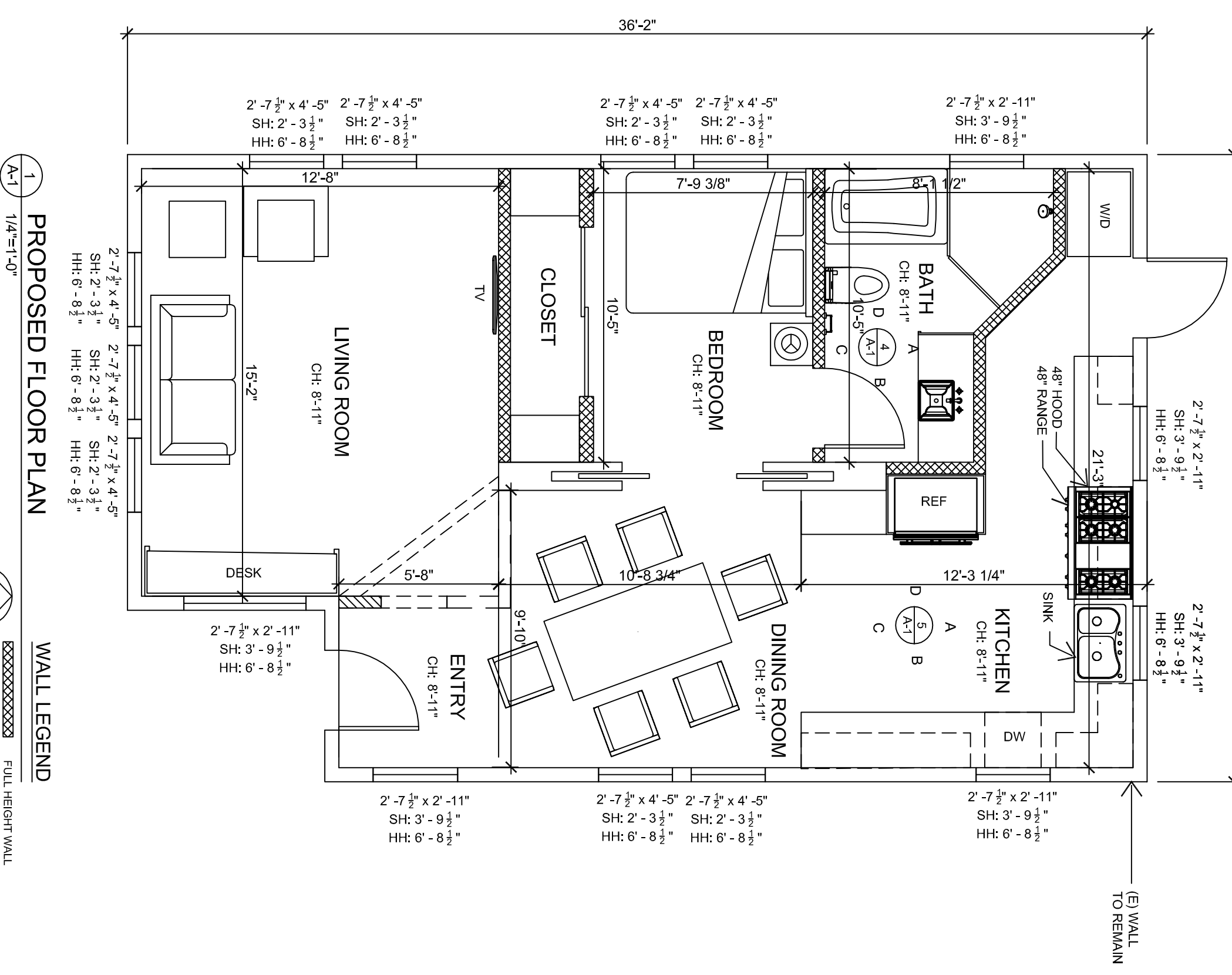
4 KITCHEN  
1/2"=1'-0"



3 EXISTING/DEMO FLOOR PLAN  
1/4"=1'-0"



2 PROPOSED ELECTRICAL PLAN  
1/4"=1'-0"



1 PROPOSED FLOOR PLAN  
1/4"=1'-0"

**ELECTRICAL LEGEND**

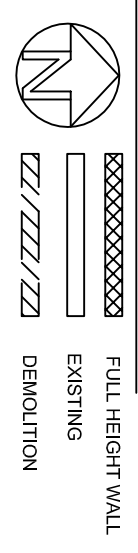
- 110 VOLT DUPLEX OUTLET
- GROUND FAULT CIRCUIT INTERRUPTER
- 220 VOLT OUTLET
- RECESSED LED CAN LIGHT
- RECESSED ADJUSTABLE SPOTLIGHT
- RECESSED LIGHT SUITABLE FOR DAMP LOCATIONS
- CEILING MOUNTED OR PENDANT LIGHT FIXTURE
- WALL MOUNTED LIGHT FIXTURE
- FLUORESCENT LIGHT
- EXHAUST FAN
- FAN/LIGHT COMBO
- UNDER-CABINET LED STRIP LIGHTS
- UNDER-CABINET OUTLET STRIPS
- SINGLE POLE SWITCH
- THREE-WAY SWITCH
- OCCUPANCY SENSOR SWITCH (MANUAL ON / AUTOMATIC OFF)
- JAMB MOUNTED SWITCH
- DIMMER SWITCH
- THREE-WAY DIMMER SWITCH
- AIR SWITCH FOR DISPOSAL
- SMOKE DETECTOR
- TELEPHONE JACK/ETHER
- TV
- GAS
- HOSE BIBB

**ABBREVIATIONS**

- FL FLUORESCENT
- LED LIGHT EMITTING DIODE
- M ON MOTION SENSOR
- (E) EXISTING

**ELECTRICAL GENERAL NOTES**

1. ALL ELECTRICAL SYMBOLS ARE NEW UNLESS OTHERWISE NOTED
2. ALL SWITCHES ON DIMMERS UNLESS OTHERWISE NOTED



**A-1**

**FLANNIGAN RESIDENCE**  
1234 LEAVENWORTH STREET  
SAN FRANCISCO, CA 94102

**WILLIAM SCHOTT**  
INTERIOR DESIGN  
434 LEAVENWORTH ST, SAN FRANCISCO 94102  
TEL: 203.554.8500 EMAIL: SCHOTT.BILL@GMAIL.COM